

TOWN OF FLORENCEVILLE-BRISTOL

**AMENDMENT NO. 12A-2
TO BY-LAW NO. 12A, A BY-LAW TO ADOPT
THE TOWN OF FLORENCEVILLE-BRISTOL MUNICIPAL PLAN**

The Town of Florenceville-Bristol under the authority vested in it by Part 3 Division C and Part 5 of the *Community Planning Act* R.S.N.B. 2017 CHAPTER 19, hereby enacts the following amendment to By-Law No. 12A as hereinafter provided.

BE IT ENACTED by the Council of the Town of Florenceville-Bristol that By-Law No. 12A, A By-Law to Adopt the Town of Florenceville-Bristol Municipal Plan is hereby amended as follows:

The Town of Florenceville-Bristol Municipal By-Law No. 12A is amended by changing the Future Land Use Designation, as shown on the Municipal Plan Future Land Use Map, for the portion of lands to be subdivided located at Centreville Road identified as PID#10083814, as shown on Schedule "A" attached to, outlined in red and forming part of this by-law amendment, from "I-1" Light Industrial Zone to "R-3" Multi-Unit Residential Zone.

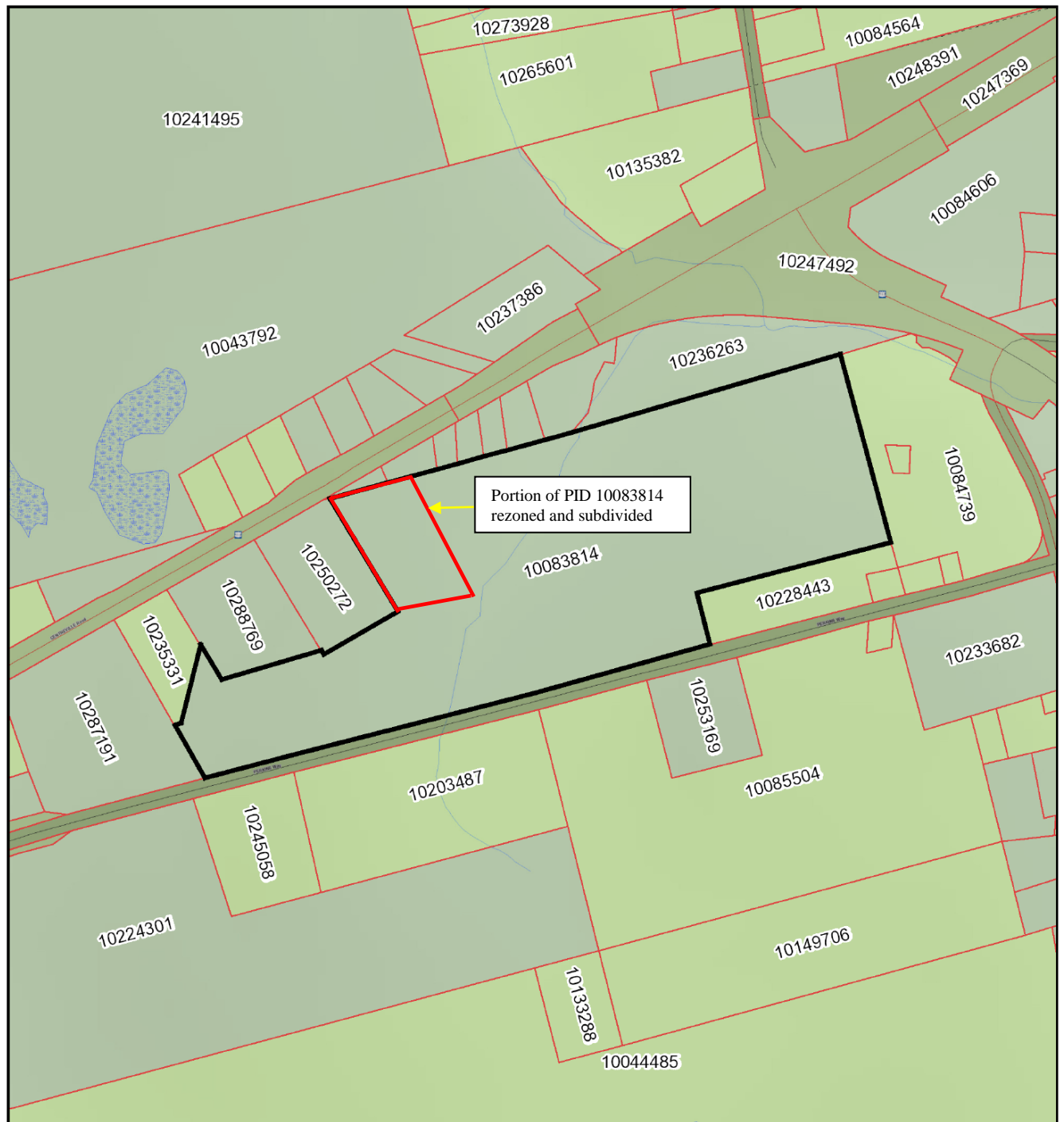
READ FIRST TIME: October 19, 2021

READ SECOND TIME: October 19, 2021

READ THIRD TIME AND ENACTED THIS 9th DAY OF November, 2021.

MAYOR

CLERK



Scale/Échelle 1:6542

Date: 2021/09/02 17:16:02



While this map may not be free from error or omission, care has been taken to ensure the best possible quality. This map is a graphical representation of property boundaries which approximates the size, configuration and location of properties. It is not a survey and is not intended to be used for legal description or to calculate exact dimensions or area.

Même si cette carte n'est peut-être pas libre de toute erreur ou omission, toutes les précautions ont été prises pour en assurer la meilleure qualité possible. Cette carte est une représentation graphique approximative des terrains (limites, dimensions, configuration et emplacement). Elle n'a aucun caractère officiel et ne doit donc pas servir à la rédaction de la description officielle d'un terrain ni au calcul de ses dimensions exactes ou de sa superficie.